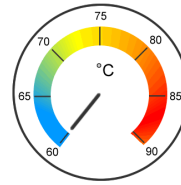


MOLYDUVAL

Aladin 21 Spray



Dry Film Lubricant

A fast drying extreme pressure bonded coating spray based on MoS₂. It will be used for service-free dry lubrication under heavy load, but low speed. It sticks well to surfaces and will then be used as dry lubricant when liquid lubricants are not sufficient enough because of great heat or cold or other unfavourable operating conditions. Useful for extreme loads, high pressure and temperatures. Reduces friction and wear.

Properties

- * prevents seizure and rust
- * reduced friction coefficient with increasing pressure
- * hochgradig rein
- * frei von abrasiven Bestandteilen
- * reduces the friction coefficient

Applications

- * for joints in instruments
- * for sliding surfaces in aeronautics
- * for enhance running-in lubrication of bearings, guidelines and gears
- * for cold flow pressing
- * Preparing the tools for stamping, deep drawing, deridging
- * for cold forming of metals
- * for lubrication of machine parts which should not be contaminated by oil or grease
- * for bearings in precision engineering, for for-life-lubrication
- * for wedges in printing machines
- * for tool preparation in metal pressing
- * for chain lubrication in dusty surroundings
- * for lubrication in vacuum
- * as release agent in high temperature range

Technical Datas

Color		gray-black
Temperature Range	°C	-185 -> +450
Temperature Range with low air access to	°C	650
Density 15°C	kg/m ³	1040
Drying Time 20°C, griffest	min	5
Drying Time 20°C, ausgehärtet	min	30
Layer Thickness *optimale*	µm	8-12
Pressure Load	kN	12
Unit	ml	400
Surface Covering	m ² /kg	7
Fineness Ø	µm	0,4

The indicated service temperatures are guide values depending on the lubricants composition and on the application. They may vary in case of special influences or ongoing use.



For further information, please see our website www.solano-industries.com/en/

The content of this manual is based on our current knowledge and experience in the development and manufacture of lubricants. Because of the complexity of tribological systems, the effect of our products depends on many parameters, which we cannot assess and which influence we cannot evaluate. For this reason general statements about the function of our products are not possible. The information in this manual, therefore, contains non-binding guidelines, which should give the technical trained reader information on possible applications. The information in this manual does not include property assurances or warranties or guarantees to the properties or suitability of this product in a specific application. Prior to its use it is absolutely necessary to test this product in the application to ensure that the product and its use is safe, economical and fully suitable. It should proceed with due diligence.